

FW: SPRINGING Into Wellness - Check out LORHN's Spring 2024 Newsletter! 🙌

Karis Engle <kengle@gladesinitiative.org>

Fri 3/29/2024 8:49 PM

To:Updates <updates@gladesinitiative.org>

From: Lake Okeechobee Rural Health Network, Inc. (LORHN) <info@hcsef.org>

Sent: Friday, March 29, 2024 4:42 PM

To: Karis Engle <kengle@gladesinitiative.org>

Subject: SPRINGING Into Wellness - Check out LORHN's Spring 2024 Newsletter! 🙌

LORHN Updates - Rural News - Trainings & More

LORHN
news & updates



MARCH 2024

In This Issue:

Partnership Spotlight

LORHN Community Programs

- Health Insurance Enrollment
- Mpox Education and Vaccination
- FREE Workshops
- Opioid Awareness

Rural Telehealth Updates

Rural News Articles



Upcoming Professional Events

Funding Opportunities

Community Resource Guides

Community Meetings

Happy Spring, Karis!



I hope you are enjoying this change to beautiful warm, but not too hot, weather and the nature around us blooming back to life. We are pleased to provide you with updates about LORHNs work in the region, rural health news and articles that affect us and the state, and resources for you or your clients.

In February I graduated with the 2023 Rural Health Fellow cohort at the National Rural Health Association's (NRHA) Rural Health Policy Institute in Washington, D.C.. The policy brief and recommendations that were presented to and adopted by the policy-making body of NRHA (The Rural Health Congress) are shared below. It was a pleasure to work with like-minded, passionate, rural health experts to develop the brief on Pediatric vaccination rates in rural America. We hope the policy framework and recommendations lead to 'moving the needle' on this important topic in a positive direction, for the sake of all rural children and teens in the U.S.

LORHN continues to remain committed to professional development for our team. Staff members have completed training in Diabetes Management through the American Diabetes Association and a 'Confronting the Impact of Tech-facilitated Abuse in Teen Relationships' training coordinated by several federal agencies. LORHN staff will also attend the Florida Rural Health Association educational summit next month (check out more details below).

We remain committed to our pillars of focus: infrastructure, community outreach, access to care, education, technology, and emerging needs/critical health focus area(s). We will continue exploring opportunities to expand our work throughout the service area to support growing and emerging needs – **please let us know how we can help support your organization and community.**

Wishing you a wonderful, safe, and healthy Spring season!

Andrea Stephenson Royster

CEO, Lake Okeechobee Rural Health Network

LORHN Spotlight: CEO Graduates with NRHA 2023 Rural Health Fellows Cohort



NRHA Policy Brief: Pediatric vaccination rates in rural America

*Authors: Cynthia Calixte, MD, MPH, Nitika Moibi, MPP,
Andrea Stephenson Royster, MBA, MHS, FACHE*

[Read Brief](#)

[All NRHA Policy Briefs](#)

This brief offers an analysis of vaccine uptake in rural communities compared to metropolitan areas. Lower vaccination rates in rural communities has led to increased infectious disease, some of which were previously considered eradicated. This brief offers a multifaceted policy framework approach to address this and improve vaccination rates among rural children and adolescents, using the '5As of vaccine access' - availability, affordability, acceptability, awareness, and activation.



Left: Andrea Stephenson Royster (LORHN CEO) and Alan Morgan (NRHA CEO).

Right: 2023 National Rural Health Association's Rural Health Fellows

Partner Spotlight: The Joseph Project 863 Inc.



The Joseph Project 863 Director, Jackie Young and LORHN CHAs,

This quarter's feature is centered on Joseph's Project 863 Inc., a volunteer mentoring program that extends assistance to underemployed individuals, disadvantaged low-income workers, and recently graduated high school students. The organization's goal is to address these issues by collaborating with local and regional employers to determine their specific requirements and assisting them in establishing a sustainable and reliable workforce in the region.

The Joseph Project shares its space with LORHN Community Health Advocates, where they engage with Hendry County residents to provide education, support, and linkage to healthcare and various human services programs. The organization also organizes a weekly food distribution for Harlem and Clewiston communities, where LORHN CHAs distribute information on health insurance enrollment, locating nearby healthcare providers, and health literacy. CHAs have also assisted residents with applications for utilities assistance and SNAP benefits.

Bree Spence and Sharon Clark.



LORHN looks forward to continued collaboration with Joseph Project 863 to provide additional health education about understanding health coverage, accessing necessary services, and managing chronic conditions.

[Learn More](#)

LORHN Community Programs

Health Insurance Enrollment Assistance

LORHN's staff are trained and prepared to help individuals and families enroll in health insurance via Medicaid, Florida KidCare, or the federal Marketplace, at no cost to consumers. We understand that these applications and understanding important terms can be confusing and are here to help.

UPDATE: Special Enrollment Period for Medicaid Unwinding extended to

November 30, 2024!



A Special Enrollment Period lets you enroll in health coverage or switch plans outside of the annual Open Enrollment Period, or during Open Enrollment for an earlier coverage start date. You may qualify for a Special Enrollment Period through the Health Insurance Marketplace® based on your income or in these situations:

"What is Medicaid Unwinding?"

- Change in primary place of living
- Loss of health insurance, like Medicaid.

The process of ending continuous Medicaid enrollment for families that was in effect during the COVID Public Health Emergency.

States have begun to disenroll households that are no longer eligible.

We are here to help individuals and families through this process and access to affordable, quality health care.

[Read More](#)

- Change in household size
- Change in eligibility for Marketplace coverage or help paying for coverage

From March 31, 2023 – November 30, 2024, you can also apply for a Marketplace plan any time after your Medicaid or CHIP coverage ends. You'll have 60 days after submitting your application to enroll in a plan that will start at the beginning of the next month after you complete your enrollment.

Eligibility criteria for tax credits with the Marketplace has increased to 400% of the federal poverty line (FPL) for households. This means a family of four can have a total household income of \$124,800 and still be eligible for credits. Households with total annual income above 400% FPL can still enroll, without tax credits

Connect with our team to determine your eligibility, window shop and compare plans, understand costs, enroll in a plan, or file an appeal.

[Do I Qualify?](#)

NEED HEALTH INSURANCE? WE CAN HELP!

OPEN ENROLLMENT IS 11/1/2023 - 1/17/2024

PROOF OF INCOME NEEDED

MINIMUM ANNUAL INCOME \$14,580
+ \$5,140 PER HOUSEHOLD MEMBER

UNLESS THERE IS A
QUALIFIED HARDSHIP



AVAILABLE DAILY | FLEXIBLE TIMES

IN-PERSON, TELEPHONE, OR VIRTUAL



CREATE ACCOUNT



ENROLL



CONNECT TO CARE

LOST MEDICAID OR KIDCARE?

GET MARKETPLACE COVERAGE

CALL OR TEXT US



(561) 545-4751
BREE



(863) 532-3099
SHARON



www.lorhn.org



You may be eligible to enroll if you meet the criteria; Medicaid and KidCare have different limits.
We can help you figure it out, compare plans, and find a doctor in-network.

2024 Annual Income Eligibility Guidelines

Household Size	1	2	3	4	5	6
100% FPL	\$15,060	\$20,440	\$25,820	\$31,200	\$36,580	\$41,960
133% FPL	\$20,029	\$27,185	\$34,340	\$41,496	\$48,651	\$55,806
200% FPL	\$30,120	\$40,880	\$51,640	\$62,400	\$73,160	\$83,920
400% FPL	\$60,240	\$81,760	\$103,280	\$124,800	\$146,320	\$167,840

FPL: Federal Poverty Line

+ \$5,140 FOR EACH ADDITIONAL PERSON.

Marketplace
Minimum

Medicaid
for Children

MediKids &
FL KidCare

Marketplace
Maximum

Hardship Exemptions



If you experienced any of these situations, you may not have to wait to enroll: homelessness, eviction, utility shut-off notice, disaster, bankruptcy, victim of domestic violence, death in household, and more.

SET UP A CALL,
VIDEO CHAT,
OR MEETING
WITH OUR TEAM

CHA

Phone Number

Meeting Site

Meeting Time

(561) 545-4751
(863) 532-3099

www.lorhn.org



Help is available in English, Spanish, and Haitian Creole.

Download and share our flyer with your friends and family!

[English Flyer](#)

[Spanish Flyer](#)

[Haitian Creole Flyer](#)



Florida Medicaid Income Limits and
Eligibility 2024

FLORIDA
POLICY
INSTITUTE

More Children Eligible for Florida's
KidCare Program with Less
Paperwork

The Florida Department of Children and Families (DCF) determines the financial eligibility for Medicaid. Eligibility requirements are primarily based on the federal poverty level (FPL), with different categories having different FPL percentages for eligibility.

Below is an outline of the specific income criteria for various groups, from infants to adults, to provide a clear understanding of the eligibility requirements for this year.

- Children up to 1 year old: 200% of the federal poverty level (FPL)
- Children ages 1-18: 133% of FPL
- Children under age 19 can qualify for Florida Healthy Kids, with modest monthly premiums, if household income is between 133% and 200% of FPL.
- Pregnant women: 196% of FPL
- Adults with minor children: 26% of FPL
- Individuals who qualify for Supplemental Security Income (SSI) automatically qualify for Medicaid in Florida.

[How to Apply](#)

[Medicaid Redetermination Information](#)

Florida Policy Institute

October 4, 2023

Florida KidCare is the state of Florida's quality, affordable health, and dental insurance for kids. Florida KidCare is made up of four unique programs— Medicaid for children, MediKids, Florida Healthy Kids and Children's Medical Services Managed Care Plan. All four Florida KidCare coverage options include doctor visits, check-ups, hospital stays, surgeries, immunizations, prescriptions, emergencies, vision and hearing, dental, mental health services and more.

Families who have an income that is too high to receive Medicaid but meet other income requirements can apply for one of these other subsidized insurance programs, which require a monthly household premium payment of \$15 or \$20 depending on the family's income level.

The new law (HB 121) increases the income limits for families enrolled in KidCare's subsidized programs so that more families can get coverage, and it adds more tiers of payment levels for a more gradual increase to the full-pay components of the program.

[Read Article](#)

Mpox Education & Prevention



Mpox vaccines are free of cost and effective at protecting you from mpox. Two doses provide the best protection. Get dose 1, wait 4 weeks, and then get dose 2. You will have maximum protection two weeks after your second dose.

Get the vaccine if you

- Are a gay, bisexual, or other same-gender loving man who has sex with men or are transgender, gender non-binary, or gender-diverse.
- Have had sexual or intimate contact with someone who may have Mpox. Get vaccinated as soon as possible after exposure, regardless of your sexual or gender identity.

And if you, in the last 6 months, have had or expect to have

- One or more sexually transmitted infections
- A weakened immune system because of another illness, like HIV
- Sexual or intimate contact with a person who is at risk of Mpox
- Anonymous sexual or intimate contact, or more than one sexual partner

LORHN is working closely with our Network members to provide education and vaccine advocacy and linkage for rural residents in Palm Beach County. Cases have continued to rise in southern Florida counties and we are working closely with HCSEF and other partners to prevent a resurgence in Palm Beach County.

If you have questions about Mpox or vaccine sites nearby, call or text (561) 545-4751.

FREE Health Education Workshops - Sign Up Today!

FREE **Diabetes Self-Management Program**



- For adults living with **Type 2 Diabetes**
- Family members and caregivers welcome
- 6 weekly 2.5 hour sessions

Problem Solving Action Plans Communication Difficult Emotions

Physical Activity & Exercise Nutrition & Healthy Eating Monitoring Reading Labels

CALL US TO SCHEDULE ONE ON-SITE

HAVE QUESTIONS? CALL 561.545.4751 OR 561.557.9273

 (561) 557-9273 LORHN.ORG @LORHN1

FREE **Chronic Disease Self-Management Program**



- For adults living with a chronic condition, such as
 - Heart disease
 - Arthritis
 - Asthma/COPD/Emphysema
 - Anxiety/Depression
 - Other physical or mental condition(s)
- Family members and caregivers welcome
- 6 weekly 2.5 hour sessions

Problem Solving Action Plans Communication

Physical Activity/Exercise Nutrition/Healthy Eating and more!

CALL US TO SCHEDULE ONE ON-SITE

HAVE QUESTIONS? CALL 561.545.4751 OR 561.557.9273

 (561) 557-9273 LORHN.ORG @LORHN1

LORHN offers two evidence-based programs that are licensed by the Self-Management Resource Center. Each one is six weeks long with participants meeting for two-and-a-half hours each week to discuss healthy eating, exercise, emotions, individual action plans and so much more. Feedback from previous residents includes:

- "I understand and pay more attention to food labels now."
- "I started exercising for the first time in a long time and feel comfortable doing so."
- "This is information I will use for the rest of my life and have shared with my adult children and grandchildren" (meal planning and portion control)
- "After 25 years of being on insulin, I was able to stop taking it using what I learned."

If your organization wants to host a workshop, contact us today to schedule!

If you want to join the workshop as a participant, contact us to join the waiting list!

Florida Rural Health Resources

Step Into Comfort: Free Diabetic Footwear Program

The Florida Podiatric Medical Society received state funding to distribute free diabetic shoes and socks to priority areas throughout the state. The program runs through June 2024 (or until supplies run out). Eligible individuals simply need to complete a short survey to apply to receive a free pair of shoes, socks, and diabetic inserts.

To be eligible, applicants must:

- Have diabetes, and
- Live in one the following counties:
 - Baker, Bradford, Calhoun, Columbia, DeSoto, Dixie, Franklin, Gilchrist, **Glades**, Gulf, Hamilton, Hardee, **Hendry**, Holmes, Jackson, Jefferson, Lafayette, Levy, Liberty, Madison, Monroe, Nassau, **Okeechobee**, Putnam, Suwannee, Taylor, Union, Wakulla, or Washington.

Step Into Comfort: Free Diabetic Footwear Program

Are you living with diabetes? We understand the importance of foot health in managing diabetes. That's why we're excited to introduce our Free Diabetic Footwear Program – a special initiative designed to provide eligible patients with comfortable and supportive footwear at no cost.

The Florida Podiatric Medical Society is providing free diabetic shoes, socks, and inserts to people in eligible counties who are living with Type 1 or Type 2 diabetes.

Supplies are limited. Interested individuals are encouraged to apply now! Visit the link or scan the QR code to begin.

See below for eligibility information.

Are You Eligible?

County of Residence

You must live in one of the following Florida counties to be eligible: Baker, Bradford, Calhoun, Columbia, DeSoto, Dixie, Franklin, Gilchrist, Glades, Gulf, Hamilton, Hardee, Hendry, Holmes, Jackson, Jefferson, Lafayette, Levy, Liberty, Madison, Monroe, Nassau, Okeechobee, Putnam, Suwannee, Taylor, Union, Wakulla, or Washington.

Diagnosis

To participate in the free diabetic footwear program, you must have a diagnosis of Type 1 or Type 2 diabetes.

Specialized Focus

The program will prioritize the elderly, people with poor physical health, individuals who are economically disadvantaged, and the physically disabled.

Apply Now

Scan the QR code using the camera feature on your cell phone.



Apply Now

[Surveymonkey.com/r/DiabeticShoes](https://www.surveymonkey.com/r/DiabeticShoes)

Paso hacia la comodidad: programa gratuito de calzado para diabéticos

¿Vives con diabetes? Entendemos la importancia de la salud de los pies en el control de la diabetes. Es por eso que nos complace presentar nuestro Programa gratuito de calzado para diabéticos, una iniciativa especial diseñada para brindar a los pacientes elegibles calzado cómodo y de apoyo sin costo alguno.

La Sociedad Médica de Podología de Florida proporciona zapatos, calcetines y plantillas gratuitos para diabéticos a personas de condados elegibles que viven con diabetes tipo 1 o tipo 2.

Los suministros son limitados. ¡Se anima a las personas interesadas a presentar su solicitud ahora! Visita el enlace o escanea el código QR para comenzar.

Consulte a continuación para obtener información sobre elegibilidad.

¿Eres elegible?

País de residencia

Debe vivir en uno de los siguientes condados de Florida para ser elegible: Baker, Bradford, Calhoun, Columbia, DeSoto, Dixie, Franklin, Gilchrist, Glades, Gulf, Hamilton, Hardee, Hendry, Holmes, Jackson, Jefferson, Lafayette, Levy, Liberty, Madison, Monroe, Nassau, Okeechobee, Putnam, Suwannee, Taylor, Union, Wakulla, or Washington.

Diagnóstico

Para participar en el programa gratuito de calzado para diabéticos, debes tener un diagnóstico de diabetes tipo 1 o tipo 2.

Enfoque especializado

El programa dará prioridad a las personas mayores, las personas con mala salud física, las personas en desventaja económica y las personas con discapacidad física.

Aplica Ya

Escanee el código QR usando la función de cámara de su teléfono celular.



Aplica Ya

[Surveymonkey.com/r/DiabeticShoes](https://www.surveymonkey.com/r/DiabeticShoes)

[Download English Flyer](#)

[Download Spanish Flyer](#)

[Apply Now](#)

Rural Telehealth Updates & Resources



TTAC

TelehealthTechnology.org

National Telehealth Technology Assessment Resource Center



Participate in our 2024 Technology

Survey. Share your insights on telehealth technologies!

[Complete Survey.](#)

Join us in exploring the latest advancements, trends, and emerging technologies driving the telehealth landscape forward. Your insights are invaluable as we navigate the ever-evolving world of technology. Let your voice be heard!

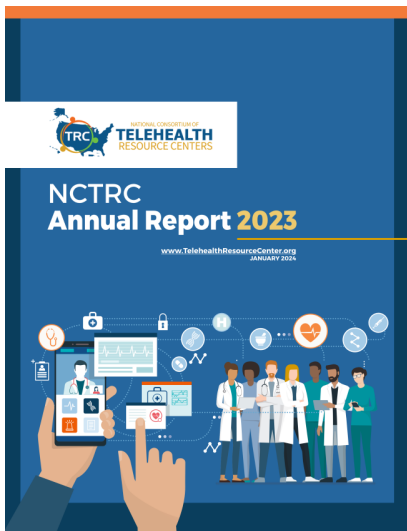
CMS Approves RPM for FQHCs and RHCs

In 2024, CMS has given the green light to include RPM and RTM in HCPCS G0511. FQHCs and RHCs can now launch monitoring programs for patients with chronic conditions while also generating significant and sustainable revenue.



This update and the '10 Things to Consider' document were provided by the South East Telehealth Resource Center.

[10 Things to Consider](#)



The National Resource Center Annual Report has been issued and is full of helpful information, resources, and toolkits.

[Download Report](#)



Home Address

During the pandemic, CMS allowed providers to use their currently enrolled location (typically a practice address) instead of a home address when providing services via telehealth. Previously CMS extended this policy to the end of 2023. In the proposal for the 2024 PFS, CMS did not address this issue, but after receiving comments from the public and holding meetings with interested parties, the agency has decided to extend this policy to the end of 2024. Many telehealth providers and advocates have raised the issue that addresses may be publicly accessible and for providers to have their home addresses listed could create a safety issue. While the temporary waiver at this time will only be extended to the end of 2024, CMS did note in the final rule that it "will also consider this issue further for future rulemaking and request that interested parties provide clear examples of how the enrollment process shows material privacy risks to inform future enrollment and payment policy development." (page reference, p. 153)

Final Rule for CY 2024 Physician Fee Schedule Fact Sheet is now available from the Center for Connected Health Policy

[Download Fee Schedule](#)

Rural News Articles



[Hundreds of Thousands of US Infants Every Year Pay the Consequences of Prenatal Exposure to Drugs, a Growing Crisis Particularly in Rural America](#)



[White House Releases Annual Agency Equity Action Plans to Further Advance Racial Equity and Support for Underserved Communities Through the Federal Government](#)

The Conversation

February 27, 2024

Commentary on the growing prenatal substance exposure crisis in West Virginia. Discusses rural specific challenges, as well as access to healthcare issues and social determinants of health measures. Cites research on infant outcomes following exposure to various substances. Highlights Project WATCH, a referral system connecting families to services in West Virginia.

[Read Article](#)



Residents of Rural 'Glades' Take A "Leap of Faith" to Combat Dementia

Florida Atlantic University

1/30/2024

To address the health disparities in rural underserved populations, researchers from [Florida Atlantic University's Christine E. Lynn College of Nursing](#) and collaborators employed an innovative study at the Southern tip of Florida's Lake Okeechobee. A local group of Faith Based Educators provide Alzheimer's

The White House

Feb 14, 2024

Highlights priority areas from across the federal government for increasing and prioritizing equity for underserved and vulnerable communities, including rural ones throughout the nation.

Includes actions to address maternal health outcomes, food insecurity, environmental health, mental health support services for students, community development, and more.

[Read Article](#)



A Florida Bill Creating 'Rural Emergency Hospitals' Is Going To The Governor

[News Service of Florida](#)

Published March 7, 2024

The measure stems from a federal law that allowed the designation of rural emergency hospitals and made them eligible for Medicare payments. The hospitals are required to be licensed by states, creating a need for the bill.

disease and related dementias (ADRD) education, screening, detection and intervention for rural residents through the tri-city area.

Rep. Joel Rudman, an elected leader and physician, said Wednesday that Medicare payments are “money our hospitals need to keep their doors open.”

[Read Article](#)

Under the measure, facilities designated as rural emergency hospitals could provide emergency services, observation care and outpatient services that do not exceed an average length of stay of 24 hours. They would be exempted from requirements about providing inpatient care and such things as surgical care.

[Learn More](#)

Upcoming Professional Events

The 27th Annual Rural Health Educational Summit



When: April 16th-17th, 2024

**Where: Embassy Suites by Hilton Orlando
Lake Buena Vista South Kissimmee, FL 34746**

***Pre-Summit Workshop:**
Rural Health Clinic Training
April 15th, 2024

***Separate
Registration
Required**



**Hosted by the Florida
Rural Health Association**

The 27th Annual Rural Health Educational Summit

April 15th-17th, 2024

Embassy Suites by Hilton Orlando Lake Buena Vista South

4955 Kyngs Heath Rd, Kissimmee, FL

We invite you to join FRHA in Kissimmee, FL for the 27th Annual Rural Health Educational Summit, an opportunity to keep alive rural health voices in Florida. The target audience for the Pre-Summit Training is Rural Health Clinic Providers, Office Managers, Administrators, Revenue Cycle Managers, and Clinic Managers.

[Register Here](#)

Pre-Summit Trainings on April 15th



In collaboration with CommHIT, the Health Council of Southeast Florida (HCSEF), Lake

Okeechobee Rural Health Network (LORHN), the Florida Community Health Worker Coalition (FCHWC), and Byte Back, we are pleased to present the Community Health Worker Pre-Summit Training. This program is tailored for Community Health Workers residing or working in rural areas.

Interested individuals are requested to complete the qualification form, shared below. Eligible attendees will be contacted by FRHA to confirm their participation. Please note that enrollment is on a first-come, first-served basis.

[CHW Eligibility Form](#)



Health Equity Conference

May 6-7, 2024

New Orleans, La.

This conference is designed for those who are dedicated to bringing quality health care and health care services to underserved and often under-represented populations, including LGBTQIA+, veteran, and homeless rural residents as well as multiracial and multicultural members of rural communities. NRHA's expanded Health Equity Conference, one of the only meetings in the nation to focus on health equity issues in rural America, is May 6-7 in New Orleans,

10th Annual Rural HIV Research & Training Conference

Reflection and Change in Challenging Times

Apr 05 – 06, 2024

Altamonte Springs, Florida - United States

Brought to you by Rising Sun Productions and The AIDS Institute, the Rural HIV Research and Training Conference is a forum for exchanging the latest information and learning the newest tools to address the challenges of the HIV/AIDS epidemic in rural communities.

La.

[Register](#)



The conference brings together health professionals to share innovative strategies, discuss unique challenges and foster advocacy and community partnerships to address HIV/AIDS prevention, intervention, and care, working with children, youth and families in rural communities.

[Register](#)

Catalyzing Change: Strengthening Community Capacity for Opioid Response

April 11, 2024, 9:30 am - April 12, 2024, 3:30 pm

Online

The Stoops Center for Communities, Families, and Children is pleased to extend an invitation to you for our innovative event, the Catalyzing Change: Strengthening Community Capacity for Opioid Response virtual symposium, hosted by our Southeast Rural Opioid Technical Assistance Regional Center (ROTA-RC).

Immerse yourself in a cutting-edge 3D virtual environment, where you can explore the exhibit hall, create a custom swag bag, and engage in video or text chats with fellow attendees. Tickets vary from \$10-50 for students, faculty, and general admission.

[Register](#)



Rural Maternal Health Series: Obstetric Readiness in Rural Facilities Without Birth Units

April 23, 2024, 3:00 pm

Virtual

Rural facilities that no longer provide planned maternity care face challenges in providing safe, high-quality services to pregnant, birthing, and postpartum people who arrive needing care. Presenters will share innovative work that puts foundational skills, teamwork, and equipment in place to be ready and responsive to their patients' needs. This is the last webinar in a 4-part series on improving maternity care in rural healthcare settings.

[Register](#)



Mid-Atlantic Telehealth Resource Center Summit 2024

April 14 – 16, 2024

Pocono Manor, PA.

Join us for #MATRC2024, where we gather healthcare pioneers, innovators, and professionals to explore the advancements and possibilities in telehealth beyond the year 2024. As we rapidly approach a time where telehealth is fully integrated into all of healthcare, we will be navigating the latest trends and best practices in telehealth implementation, remote patient monitoring, virtual consultations, and AI-driven healthcare solutions.

[Register](#)



Implementation of Telehealth Services in Rural Public Libraries

April 3, 2024 3:00 pm – 4:00 pm

Virtual

Public libraries are increasingly recognizing the importance of facilitating access to telehealth services to their communities. These services can vary widely based on the resources and needs of the library and the community. This webinar will highlight a project in Colorado to fund the development of telehealth services in rural library sites across the state.

[Register](#)



2024 Florida Asthma Coalition Summit

"A Better Tomorrow: Navigating Asthma Management Across the Lifespan"



June 6 -7

Lakeland, FL (and Virtual)

This will be a FREE, full-day conference that provides an excellent opportunity to network with asthma professionals and caregivers across the state who work in hospital, clinical, community, and school-based settings and to hear from leaders in the field and subject matter experts speak about cutting edge asthma science and therapies.

Continuing Education credits will be available for a variety of professions.

[Register](#)



Rural Maternal Health Webinar Series

March 26, 2024 at 2:00 p.m.

April 9, 2024 at 2:00 p.m.

April 23, 2024 at 3:00 p.m.

Registration is now open for a 4-part webinar series presented by the Federal Office of Rural Health Policy (FORHP), in collaboration with the Rural Health Information Hub, to

Centering Survivor Dignity: Applying the Wisdom of Social Movements to Address Health Needs

April 30th, 2024: Webinar 2:

Harm Reduction for Survivors

May 28th, 2024: Webinar 3:

Child Welfare and Family Violence Advocates

July 25th, 2024: Webinar 4:

Housing Justice for Indigenous Survivors

In recent years health and social service programs have prioritized addressing social needs— such as personal safety, housing, food and income— as a strategy to promote health and well-being. In addition to domestic violence advocacy services, survivors often seek resources to meet other social needs. In this 4-part webinar series, we will learn from programs implementing strategies that promote economic justice, housing stability, food sovereignty, and harm reduction.

[Register](#)



Florida Public Health Association 2024 Student Conference

support access to safe, high-quality maternity care in rural communities. Focused on the needs of rural hospitals with and without birth units, the series will launch in March 2024 and support facilities to understand the new Birthing Friendly Hospital Designation and earn recognition through regional collaboration and implementation of patient safety care bundles. In addition, the final installment will address hospitals without birth units to support their readiness to care for pregnant, birthing, and postpartum people who present for care.

[Register](#)

Resilience of Public Health: Professional Development Meets Practice

April 12th, 2024

AdventHealth Nicholson Center, 404 Celebration Pl. Celebration, FL 34747

The Florida Public Health Association (FPHA) extends an invitation for you to attend a groundbreaking student-led and student-driven conference. This unique event will center on the resilience of public health and the practical application of professional development within the field. Marking a first for FPHA, we eagerly welcome your participation as both presenters and attendees!

[Register](#)



2024 American Association for the Treatment of Opioid Dependence, Inc. (AATOD) Conference

May 18 - May 22, 2024

Las Vegas, Nevada at Planet Hollywood Resort and Casino

Our intent is to educate and promote acceptance and integration of MAT options by patients, families, clinicians, the medical system, judicial systems, government, policymakers, social service administrations, and the general public. We will disseminate innovative, evidence-based initiatives and treatment techniques to better serve patients and providers, improve program development and administration, promote integration across the continuum of care, and enhance patient outcomes to assist communities in developing an effective response to this crisis.

[Register](#)

[Opioid Resource
Fact Sheet](#)

[Community Action
Guide](#)

[Podcast](#)

[Find Naloxone
Providers](#)

[Public Safety
Alert](#)

Funding Opportunities

[Sign up](#) for LORHN's bi-weekly distribution of the GrantStation Insider Content e-newsletter or view LORHN's GrantStation Insider Content e-newsletter [archive page](#) for previous funding opportunities.

Funding for Individual & Family Assistance

[Glades Electric Charitable Trust, Inc. \(Glades, Hendry, Highlands, and Okeechobee\)](#)

Almost 70 percent of Glades Electric Cooperative members participate in Operation Round-Up, which helps people in GEC's service area who have exhausted normal avenues of financial assistance. The fund is for deserving individuals and organizations. If you know of people who need and deserve assistance and live within the Glades Electric service area (Glades, Hendry, Highlands, and Okeechobee counties), encourage or [help them to complete an application](#).

[The Agricultural and Labor Program, Inc. \(ALPI\) \(Collier, Glades, Hendry, Highlands, Martin, Polk and St. Lucie\)](#)

All applicants applying for services must have a total household income of no more than 150% Federal Poverty guidelines; be responsible for paying their home heating or cooling bills; and be a U.S. citizen, qualified alien, or permanent resident of the U.S. Programs are available for individuals, children, and families.

USDA Local Food Promotion Program

The U.S. Department of Agriculture (USDA) expects to make 150 grants with a total investment of \$10.5 million for projects that increase access to locally produced food. LFPP funds projects that develop, coordinate, and expand local and regional food business enterprises that engage as intermediaries in indirect producer to consumer marketing to help increase access to and availability of locally and regionally produced agricultural products. *Deadline May 14*

Palm Beach County Community Services Department

Eligible Palm Beach County residents can apply for financial and other support services, including rental and relocation assistance, utility assistance, home repair programs, homeless services, indigent cremation program, senior services, veteran services, and Ryan White services.

Affordable Connectivity Program

The Affordable Connectivity Program (ACP) is a Federal Communications Commission (FCC) program that replaces the Emergency Broadband Benefit Program (EBB Program) to help low-income households pay for internet service and connected devices. Only one monthly service discount and one device discount is allowed per household. To receive the connected device discount, consumers need to enroll in the ACP with a participating provider that offers connected devices (Note: not all internet companies offer device discounts.) The internet company will provide a discount to the consumer.

State & National Grants

Notice of Special Interest (NOSI): Research on Barriers to Care and Risk of HIV-Associated Comorbidities among Vulnerable Population Groups

NHLBI is interested in receiving applications that incorporate interdisciplinary research collaborations, particularly between established and junior investigators. Specific areas of research interest include, but are by no means limited to: Increased HIV awareness in populations that are disproportionately affected by HIV-related HLBS disorders; Increased uptake of pre-exposure prophylaxis (PrEP) in populations that are disproportionately affected by HIV-related HLBS disorders; Enhanced opportunities for HIV testing and diagnosis in disproportionately at-risk populations for HIV-related HLBS disorders that are currently being missed; Improved HIV care retention within affected populations, including treatment for HIV-related HLBS co-morbidities.

Syndemic connections between HIV-related HLBS co-morbidities with mental health, experience of violence and other types of traumas, alcohol and substance use, and/or infectious diseases.

Deadline May 2025

Southeast Crescent Regional Commission (SCRC) J-1 Visa Waiver Program

Offers a J-1 Visa waiver to foreign physicians who commit to serving for 3 years in rural areas within the Southeast Crescent service area, allowing them to remain in the United States. *Applications accepted on an ongoing basis.*

Southeast Rural Community Assistance Loan Fund Program

Community development loans to local governments, public service authorities, user associations, nonprofit organizations, and other community entities for the development and/or construction of large-scale community projects. *Deadline: ongoing basis*

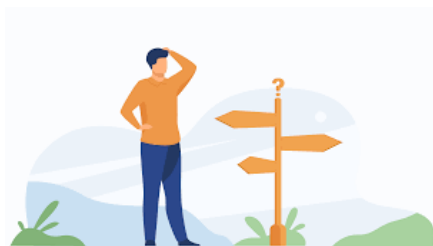
Telecommunications Infrastructure Loans and Loan Guarantees

USDA Telecommunications Infrastructure Loans and Loan Guarantees provide financing for telephone and broadband infrastructure in rural areas. Funds may be used to finance broadband-capable telecommunications services, including improvements, expansions, construction, acquisitions, and refinancing. *Applications accepted year-round*

www.grants.gov

Learn about Federal Grant forecasted, posted, and archived grants available via various Federal Government Programs. Grants Learning Center provides information about eligibility, writing, reporting, policies, systems, and more.

LORHN Community Resource Guides



Knowing where to start looking for help for yourself, a friend, family member, or client can be overwhelming. LORHN has developed a community resource guide for each community of our service area. Every guide includes phone numbers for various county services as well as local medical services, senior services, medical and social support services, food, housing and

utilities, pregnancy and childcare, mental health services, and employment services.

Click each geographic area below to download the community guide, please share them.

Notice something missing? Let us know!

[Western PBC](#)

[Okeechobee](#)

[Hendry](#)

[Glades](#)

[Indiantown](#)

[Hendry/Glades Mental Health Services Flyer](#)

Community Meetings

Hendry & Glades

Community Collaborative Meetings

Contact: [Lisa Sands](#)

1st Friday of each month

8:30 am - 11:30 am

Western Palm Beach

P.A.T.C.H.

Contact: [Marcia Bahia](#)

3rd Tuesday of each month

9:00 am - 10:45 am

Okeechobee

Community Collaborative Council (CCC)

Contact: [Jeff Howard](#)

4th Tuesday of each month

10:00 am - 11:00 am

Martin County

InterAgency Coalition

Contact: [Chelsey Matheson](#)

2nd Wednesday of each month

8:30 am - 10:00 am




non-profit corporation designed to provide for the special and specific health-related needs of the residents, visitors, and businesses in the Lake Okeechobee area; with extended services to Glades, Hendry, Okeechobee, Western Martin, and Western Palm Beach counties.



LORHN was established through Florida legislation (Statute 381.0406) and is one of nine local rural health networks covering the state of Florida. As per Florida statute, the goal of the networks shall be to ensure that quality health care is available and efficiently delivered to all persons in rural areas. Our vision is to promote/provide for the special and specific health needs of the residents, visitors, and businesses in the Lake Okeechobee area.

 [Share This Email](#)

 [Share This Email](#)

 [Share This Email](#)

LAKE OKEECHOBEE RURAL HEALTH NETWORK | 888-880-8242 | www.LORHN.org

LORHN | 600 Sandtree Drive, Suite 101, Palm Beach Gardens, FL 33403 www.lorhn.org

[Unsubscribe \[kengle@gladesinitiative.org\]\(mailto:kengle@gladesinitiative.org\)](#)

[Update Profile](#) | [Constant Contact Data Notice](#)

Sent by info@hcsef.org powered by



[Try email marketing for free today!](#)