

OCR Alert - Parks and Rec Community Needs Assessment!

Office of Community Revitalization <OCRNews@pbcgov.org>

Mon 10/30/2023 6:50 PM

To: Office of Community Revitalization <OCRNews@pbcgov.org>

Cc: Ruth C. Moguillansky <rmoguill@pbcgov.org>; Alyssa Tagdharie G. <AGTagdharie@pbcgov.org>

All of the information below can be found at [PBC Parks and Recreation Community Needs Assessment's website \(PBC Parks Plan.com\)](#).

Palm Beach County is working to gather public input on your parks and recreation system through a Community Needs Assessment. As part of this effort, the County will be hosting a series of Community Meetings to help establish the needs and priorities for parks, programs, and recreation services.

All meetings are open to the public and will be held at four distinct geographic locations throughout the County.

- Community Meeting #1 – *Delray Beach* - Green Cay Nature Center; **November 08th**, 2023; 6:00 – 8:00 pm
- Community Meeting #2 – *West Palm Beach* - Okeeheelee Nature Center; **November 09th**, 2023; 6:00 – 8:00 pm
- Community Meeting #3 – *Belle Glade* - Belle Glade Public Library; **November 14th**, 2023; 6:00 – 8:00 pm
- Community Meeting #4 – *Jupiter* - West Jupiter Community Center; **November 15th**, 2023; 6:00 – 8:00 pm

Your feedback is an integral part of the Community Needs Assessment process.

Have Your Say - We are offering an online survey for members of the community to complete. Please take the survey in either [English](#), [Spanish](#), or [Creole](#) by clicking the language of your choice. This survey will provide you with the opportunity to further establish the community's needs and priorities for Palm Beach County's parks and recreation system. This survey is voluntary and will take approximately 10-12 minutes to complete. Your answers will be completely confidential. Responses will be helpful for the County and the consultant team to learn about your preferences for and usage of the existing recreation system.

Project Purpose - The Community Needs Assessment (CNA) is intended to serve as a guide for obtaining and interpreting valuable feedback on the recreation needs and priorities of Palm Beach County residents. The study will assist the Parks and Recreation Department in the formation of its goals, policies, and strategic plans; future development of program areas and facilities to meet the needs of the community, and demonstrating if programming or facility deficiencies exist throughout or in the regions of the County.

The purpose of the CNA is to provide the opportunity to lay the foundation for a new Vision and goals of the Parks and Recreation Department and establish a shared set of community needs and priorities. Input obtained during this needs assessment will ultimately provide a focused direction for the development and delivery of parks, recreation, cultural and community services. This assessment will help ensure that Palm Beach County is meeting the needs of residents today, while continuing to provide high-quality, sustainable and equitable park system for the future.

Project Objectives:

- Build on previous planning efforts in order to integrate needs and priorities with other County plans and initiatives
- Communicate complex issues associated with this planning process understandable to residents and stakeholders
- Connect with the community through outreach and effectively communicate the benefits of parks, recreation facilities
- Convey importance of community input to building a great park system for the future
- Provide a range of opportunities for residents and stakeholders to provide input and have their needs and priorities heard
- Make every effort to implement a process that is inclusive, transparent, and empowering for all members of the community

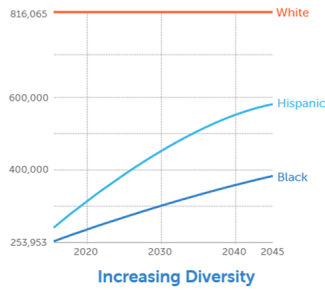
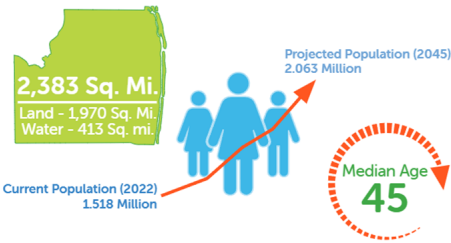
Project Process - The CNA is intended to provide valuable community input that will be utilized for the planning, acquisition, development and operations of parks, trails, park facilities, and recreation and cultural programs throughout the County. The assessment will be conducted in a linear process, building upon previous work; beginning with an overview of the existing parks, analysis of public needs and priorities, formation of a long-range vision, and lastly, a strategic plan for implementation.

Project Schedule - The CNA process is currently in the Engagement Phase, to identify community needs and priorities and begin building the foundations for shared feedback of the needs and priorities of the community. This assessment effort will ultimately lead a synthesis of all community input and the establishment of a set of parks and recreation needs and priorities.

1. Outreach – August 2023 – October 2023 – Connecting with the Community
 - a. Meeting Advertisements
 - b. Social Media
 - c. Project Website
 - d. Community Outreach
2. Engagement – October 2023 – December 2023 – Gathering Community Input
 - a. Stakeholder Interviews
 - b. Focus Groups
 - c. Community Meetings
 - d. Virtual Room
 - e. Online Survey
 - f. Statistically Valid Survey
3. Summary – January 2024 – March 2024 – Establishing Community Needs and Priorities
 - a. Consolidation
 - b. Detailed Synthesis Analysis
 - c. Summary of Community Needs and Priorities

Your County - Located in the southeastern part of Florida, Palm Beach County (PBC) stretches from Florida's Atlantic coast into the state's rural center and includes the northern edge of the Everglades National Park. PBC is the third most populous county in the state and is one of three counties in the Miami metropolitan area. The eastern third of Palm Beach County is highly urbanized, while the central and western portions of the county are suburban or rural. The Atlantic coastline of Palm Beach County consists mainly of barrier islands and peninsulas separated from the mainland by the Intracoastal Waterway.

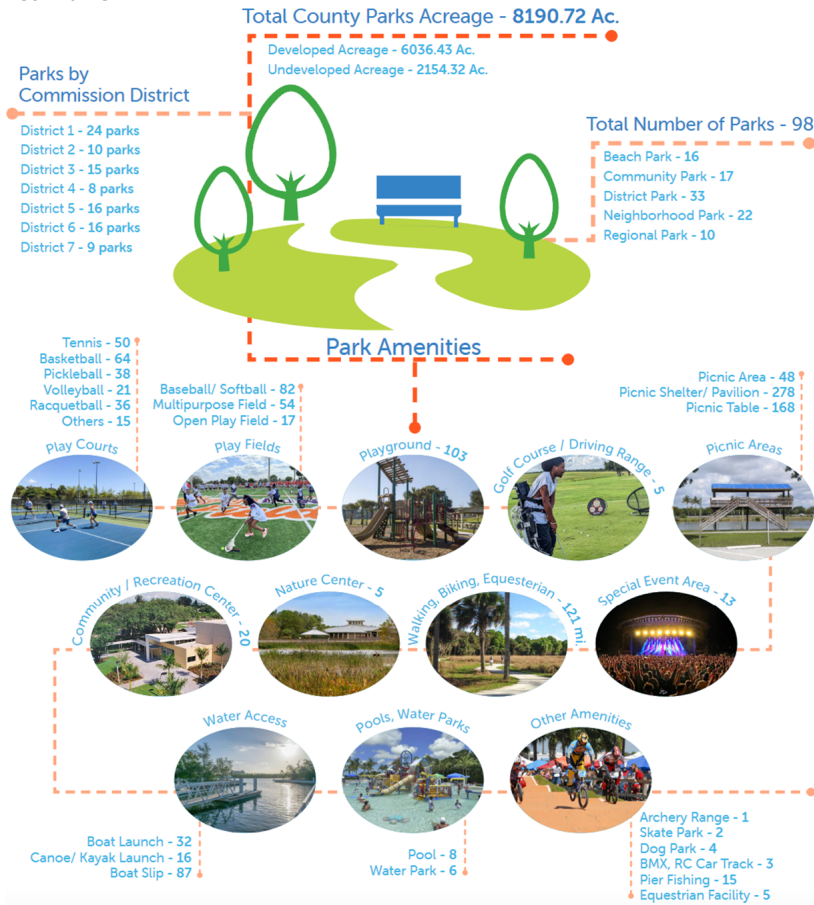
metropolitan area.



Complimentary Planning Efforts – Guiding Documents - Comprehensive Needs Assessment Plan is part of an interconnected network of planning initiatives conducted at local and regional scales. Results from this assessment will be analyzed within the context of other plans and initiatives to identify areas of alignment, key trends, and potential collaboration opportunities. The list of referenced guiding documents include the following:

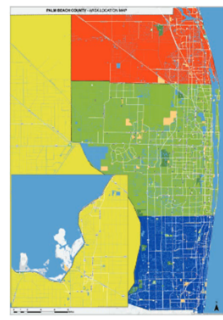
- Palm Beach County Parks and Recreation Strategic Plan 2022 - 2025
- Palm Beach County Comprehensive Plan - Recreation and Open Space Element
- Palm Beach County Greenways and Trails Plan
- Palm Tran - FY 2021 - 2031 Transit Development Plan
- Palm Beach County Parks and Recreation Surtax Project List

Your Parks:



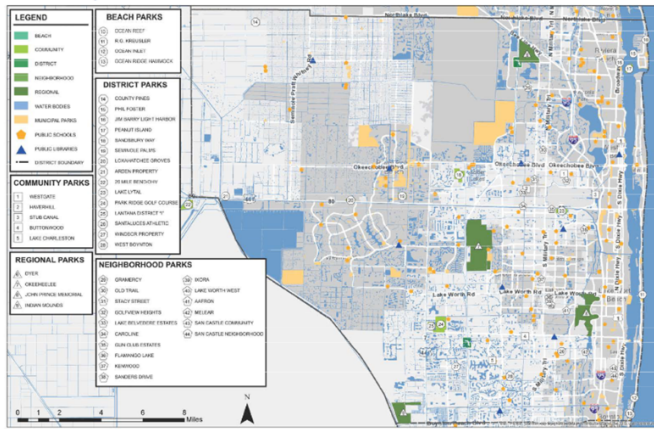
Park System Base Maps:

Map Key

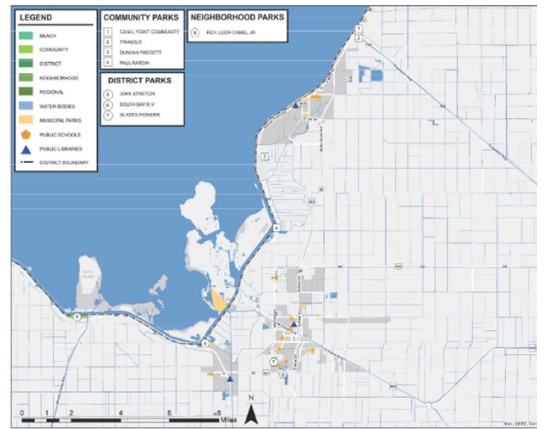


LEGEND	
	NORTH
	CENTRAL
	SOUTH
	GLADES

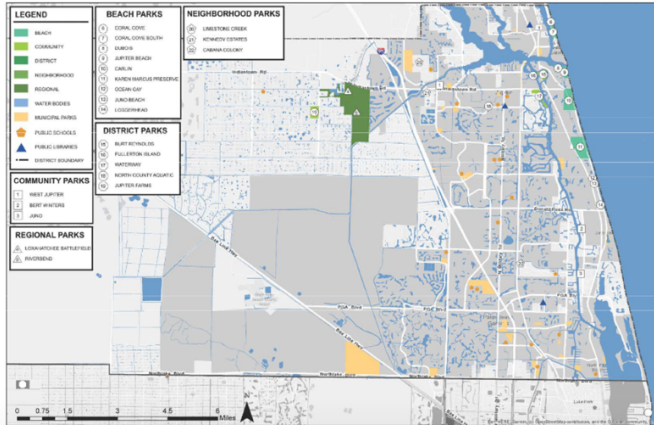
Location Map (Central)



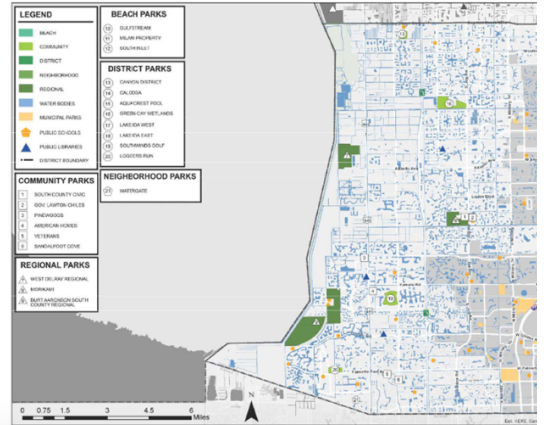
Location Map (Glades)



Location Map (North)



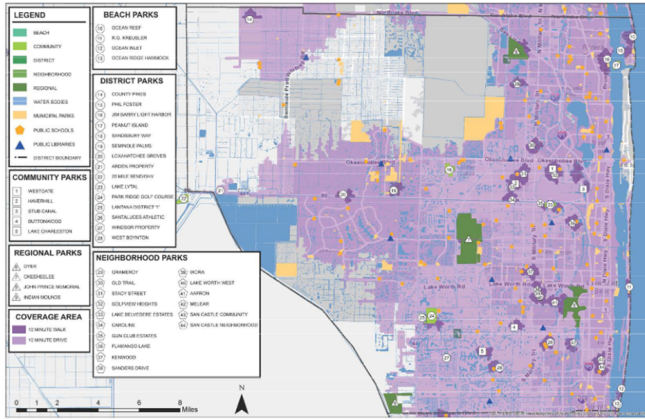
Location Map (South)



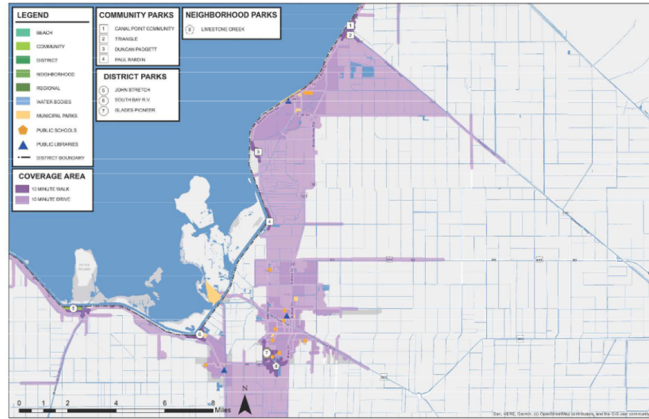
Level of Service – What is Level of Service? Level of Service is a measure of a park system’s ability to provide parkland, facilities, and access to its residents. There are three types of Level of Service (LOS) – Acreage LOS, Facilities LOS, and Access LOS. Acreage and Facility LOS are calculated based on acreage or units serving the population. Access LOS is depicted visually by measuring out a specific distance from a park based on a 10 to 15-minute walk, or a 1/2 mile radius. For the purpose of this assessment, the LOS analysis prioritizes Access LOS as its primary metric.

Level of Service Maps:

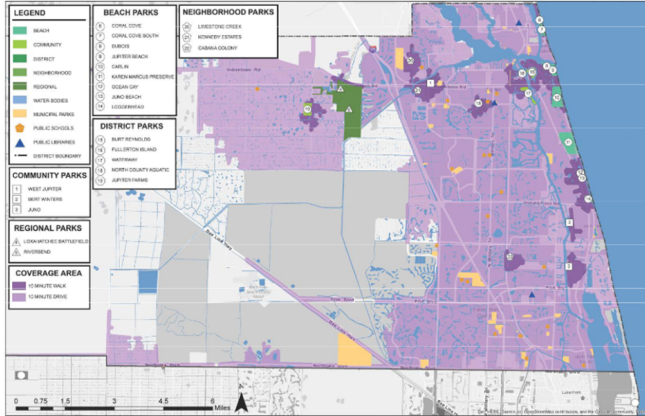
Location Map (Central)



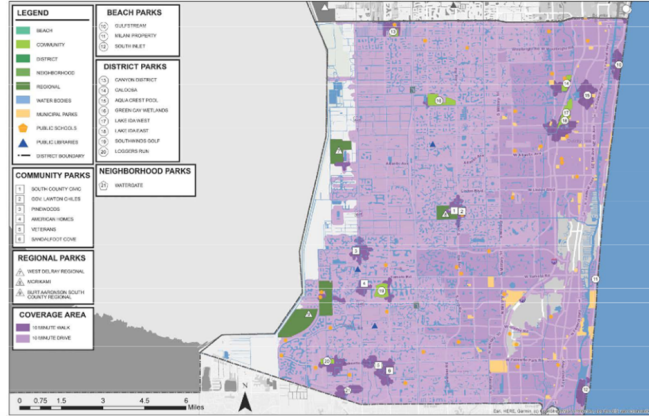
Location Map (Glades)



Location Map (North)



Location Map (South)



What are the next steps:

October 2023 - December 2023

- Advertise Engagement October 2023
- Launch Website October 2023
- Public Meetings November 2023
- Conduct Surveys October - December 2023
- Virtual Engagement Open House October - December 2023

January 2024 - March 2024

- Needs & Priorities Assessment Report February 2024
- Commission Presentations March 2024

Please provide your feedback on the Parks and Recreation Community Needs Assessment by visiting [PBC's Virtual Room](#).

Under Florida law, e-mail addresses are public records. If you do not want your e-mail address released in response to a public records request, do not send electronic mail to this entity. Instead, contact this office by phone or in writing.