

**FW: The Well Issue 6 Has Landed!**

Karis Engle <kengle@gladesinitiative.org>

Mon 8/22/2022 3:33 PM

To: Updates <updates@gladesinitiative.org>

**From:** BeWell <lzuchman@bewellpbc.org>

**Sent:** Wednesday, August 17, 2022 12:00 PM

**To:** Karis Engle <kengle@gladesinitiative.org>

**Subject:** The Well Issue 6 Has Landed!

**The Well of PBC Issue 6 Has Landed!**

---

READ NOW ON



---

## Mental Health Awareness To Responsibility

The Well of PBC Creative Team is extremely honored to release our sixth issue. In this issue, you will read inspirational stories from residents who are dedicated to not only mental health awareness but also to the responsibility of attending to their mental health and helping their neighbors do the same.

[The Well of PBC](#) is an online publication focused on Palm Beach County. The mission of The Well of PBC is to become the primary resource for behavioral health and wellness for Palm Beach County, a safe exchange space for community, and an outlet for our neighbors and stakeholders to transform the

behavioral health landscape.

Support this local publication by subscribing to receive future issues and updates. And don't forget to share this publication with your family, friends, co-workers, and neighborhood, and ask them to subscribe and share as well.

We invite you to showcase your talent by contributing to The Well. Contact our editor Julie Khanna for guidelines or to learn more at [thewell@bewellpbc.org](mailto:thewell@bewellpbc.org).

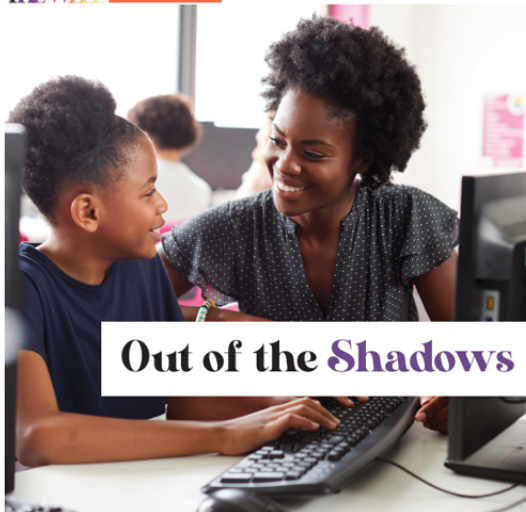
Click on the image and visit [The Well of PBC](#).

LET US KNOW YOUR FAVORITE COLUMN  
CONNECT WITH US ON OUR SOCIAL MEDIA CHANNELS



## Feature Story: Out of the Shadows

THE WELL FEATURE STORY



Out of the Shadows

BY MELANIE OTERO

## Beyond The Couch: The Iconic Breakers Palm Beach Working On Mental Health



PHOTOGRAPH BY JAMES WELSMAN (USA TODAY)

## The Reservoir: A Safe Place to Land



## The Providers: Expanding Student Mental Health Support through School Based Care



Thank you to our Invested Partners!



Copyright © 2022 BeWellPBC

Our mailing address is:  
700 South Dixie Highway, Suite 205  
West Palm Beach, Florida 33401

Want to change how you receive these emails?

You can [update your preferences](#) or [unsubscribe from this list](#).

